

What's New in Optegra[®] 15.0

Optegra 15.0

DOC50016-004

Copyright © 2007 Parametric Technology Corporation. All Rights Reserved.

User and training guides and related documentation from Parametric Technology Corporation and its subsidiary companies (collectively “PTC”) is subject to the copyright laws of the United States and other countries and is provided under a license agreement that restricts copying, disclosure, and use of such documentation. PTC hereby grants to the licensed software user the right to make copies in printed form of this documentation if provided on software media, but only for internal/personal use and in accordance with the license agreement under which the applicable software is licensed. Any copy made shall include the PTC copyright notice and any other proprietary notice provided by PTC. Training materials may not be copied without the express written consent of PTC. This documentation may not be disclosed, transferred, modified, or reduced to any form, including electronic media, or transmitted or made publicly available by any means without the prior written consent of PTC and no authorization is granted to make copies for such purposes.

Information described herein is furnished for general information only, is subject to change without notice, and should not be construed as a warranty or commitment by PTC. PTC assumes no responsibility or liability for any errors or inaccuracies that may appear in this document.

The software described in this document is provided under written license agreement, contains valuable trade secrets and proprietary information, and is protected by the copyright laws of the United States and other countries. It may not be copied or distributed in any form or medium, disclosed to third parties, or used in any manner not provided for in the software licenses agreement except with written prior approval from PTC.

UNAUTHORIZED USE OF SOFTWARE OR ITS DOCUMENTATION CAN RESULT IN CIVIL DAMAGES AND CRIMINAL PROSECUTION.

For Important Copyright, Trademark, Patent, and Licensing Information: For Windchill products, select About Windchill at the bottom of the product page. For InterComm products, on the Help main page, click the link for Copyright 2007. For other products, select Help > About on the main menu for the product.

UNITED STATES GOVERNMENT RESTRICTED RIGHTS LEGEND

This document and the software described herein are Commercial Computer Documentation and Software, pursuant to FAR 12.212(a)-(b) (OCT'95) or DFARS 227.7202-1(a) and 227.7202-3(a) (JUN'95), and are provided to the US Government under a limited commercial license only. For procurements predating the above clauses, use, duplication, or disclosure by the Government is subject to the restrictions set forth in subparagraph (c)(1)(ii) of the Rights in Technical Data and Computer Software Clause at DFARS 252.227-7013 (OCT'88) or Commercial Computer Software-Restricted Rights at FAR 52.227-19(c)(1)-(2) (JUN'87), as applicable. 02202007

Parametric Technology Corporation, 140 Kendrick Street, Needham, MA 02494 USA

Table of Contents

Preface

Related Documents	v
Book Conventions	vi
Online User Documentation	vii
Printing Documentation	vii
Resources and Services	viii
Documentation Comments	viii

New Features and Enhancements

Vault Features	1-2
Installing Optegra Vault on Windows	1-2
Enhanced Password Security for Oracle User System	1-2
EPD.Connect Features	1-3
New Application Option to Detect and Manage Clashing Objects	1-3
Loading Viewstate Files in EPD.Visualizer or 3D Viewer	1-4
Creating the CGM File of the Product Structure Tree	1-5
Enhancements to the COMPARE Part Command	1-6
Enhanced Performance of Runtime List of Applications	1-7
Rulebase Support for CATIA V5	1-7

Preface

What's New in Optegra 15.0 provides information on new features and enhancements to Optegra.

Related Documents

The *Optegra 15.0 Release Notes* can be helpful as you use the *What's New in Optegra 15.0*.

Book Conventions

The following table illustrates and explains conventions used in writing about Optegra applications.

Convention	Example	Explanation
EPD_HOME	cd \$EPD_HOME/install (UNIX) cd %EPD_HOME%\install (Windows)	Represents the default path where the current version of the product is installed.
Menu selections	Vault > Check Out > Lock	Indicates a command that you can choose from a menu.
Command buttons and options	Mandatory check box, Add button, Description text box	Names selectable items from dialog boxes: options, buttons, toggles, text boxes, and switches.
User input and code	Wheel_Assy_details -xvf /dev/rst0 Enter command> plot_config	Enter the text in a text box or on a command line. Where system output and user input are mixed, user input is in bold.
System output	CT_struct.aename	Indicates system responses.
Parameter and variable names	tar -cvf /dev/rst0 filename	Supply an appropriate substitute for each parameter or variable; for example, replace filename with an actual file name.
Commands and keywords	The ciaddobj command creates an instance of a binder.	Shows command syntax.
Text string	"SRFGROUPA" or 'SRFGROUPA'	Shows text strings. Enclose text strings with single or double quotation marks.
Integer	n	Supply an integer for <i>n</i> .
Real number	x	Supply a real number for <i>x</i> .
#	# mkdir /cdrom	Indicates the root (superuser) prompt on command lines.
%	% rlogin remote_system_name -l root	Indicates the C shell prompt on command lines.
\$	\$ rlogin remote_system_name -l root	Indicates the Bourne shell prompt on command lines.
>	> copy filename	Indicates the MS-DOS prompt on command lines.
Keystrokes	Return or Control-g	Indicates the keys to press on a keyboard.

Online User Documentation

Online documentation for each Optegra book is provided in HTML if the documentation CD-ROM is installed. You can view the online documentation from an HTML browser or from the HELP command.

You can also view the online documentation directly from the CD-ROM without installing it.

From an HTML Browser:

1. Navigate to the directory where the documents are installed. For example,
\$EPD_HOME/data/html/htmldoc/ (UNIX)
%EPD_HOME%\data\html\htmldoc\ (Windows)
2. Click `mainmenu.html`. A list of available Optegra documentation appears.
3. Click the book title you want to view.

From the HELP Command:

To view the online documentation for your specific application, click HELP. (Consult the documentation specific to your application for more information.)

From the Documentation CD-ROM:

1. Mount the documentation CD-ROM.
2. Point your browser to:
CDROM_mount_point/htmldoc/mainmenu.html (UNIX)
CDROM_Drive:\htmldoc\mainmenu.html (Windows)

Printing Documentation

A PDF (Portable Document Format) file is included on the CD-ROM for each online book. See the first page of each online book for the document number referenced in the PDF file name. Check with your system administrator if you need more information.

You must have Acrobat Reader installed to view and print PDF files.

The default documentation directories are:

- \$EPD_HOME/data/html/pdf/doc_number.pdf (UNIX)
- %EPD_HOME%\data\html\pdf\doc_number.pdf (Windows)

Resources and Services

For resources and services to help you with PTC (Parametric Technology Corporation) software products, see the *PTC Customer Service Guide*. It includes instructions for using the World Wide Web or fax transmissions for customer support.

Documentation Comments

PTC welcomes your suggestions and comments. You can send feedback electronically to doc-webhelp@ptc.com.

New Features and Enhancements

This document provides an overview of the general enhancements and new features grouped by product in Optegra 15.0. For detailed information, see the product-specific online documentation.

- Vault Features
- EPD.Connect Features

Vault Features

Installing Optegra Vault on Windows

You can install and refresh Optegra Vault on Windows if you are logged on with Administrator privileges. Logging on as administrator is not required.

Enhanced Password Security for Oracle User System

Vault installation and refresh procedures no longer depend on the Oracle `system` user password as `manager`. Instead, Vault installation uses Oracle password authentication at the system level. As an Oracle Administrator, you can use any valid password for the Oracle Database Administrator (DBA) user system.

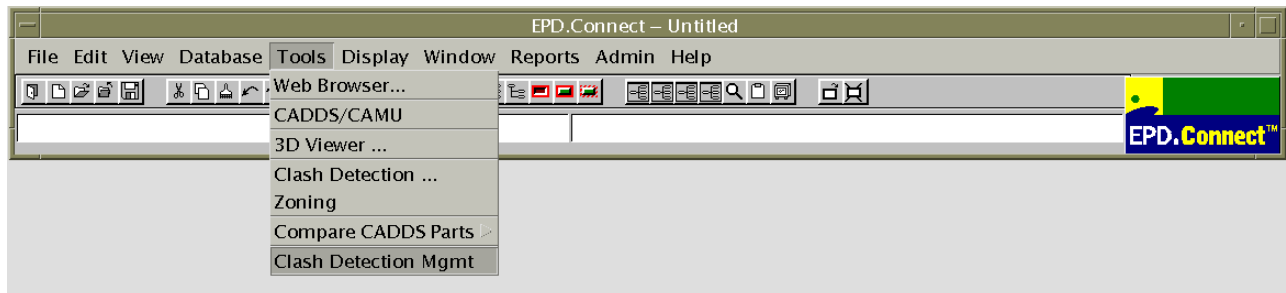
EPD.Connect Features

New features and enhancements to EPD.Connect are described in this section. See *EPD.Connect User Guide* for more details.

New Application Option to Detect and Manage Clashing Objects

The Clash Detection and Management (CDM) application options, new for this release of CADD5 and Optegra, enable you to detect, review, manage, and resolve clashes at part (component) or business object (items) level, or both. Use this application to check for local clashes within your active local parts and to identify the clashes of the active part or assembly against the contents of the complete master product structure. You can also perform global clashes and manage these clashes during a project life cycle. You can view the clashes in either CADD5 5 or EPD.Visualizer and uniquely manage and resolve these clashes.

In CADD5 5, you can access this application option from UTILITY > CLASH DETECTION MGMT on the CADD5 top menu bar. In EPD.Connect, you can access this application option from Tools > Clash Detection Mgmt on the EPD.Connect menu bar as shown.



CDM can be used outside of CADD5 and EPD.Connect with restricted functionality.

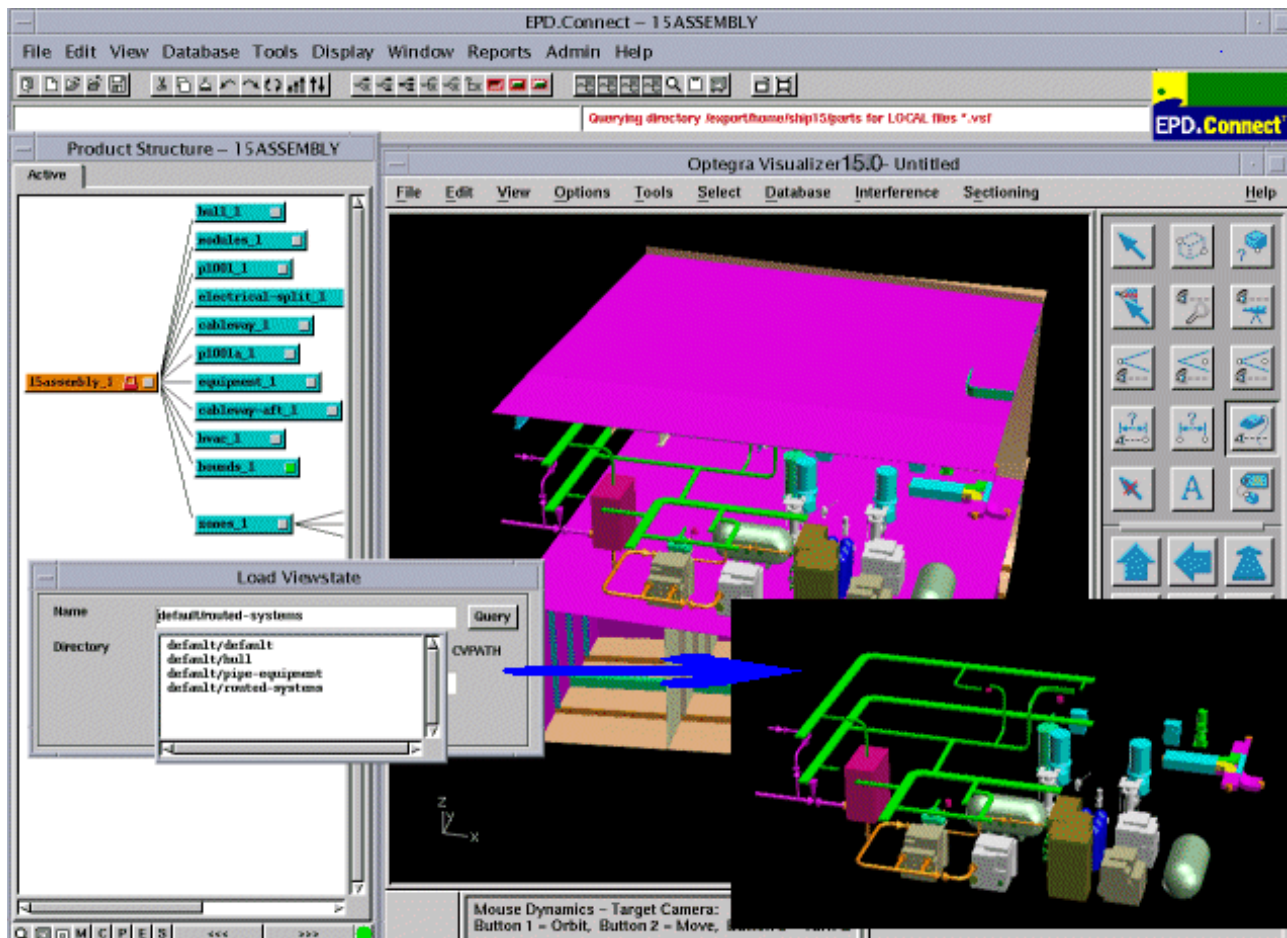
The CDM application and the *Clash Detection and Management (CDM) User Guide and Menu Reference* are planned to be available with the M010 Release of CADD5 and Optegra 15.0.

Loading Viewstate Files in EPD.Visualizer or 3D Viewer

You can use the viewstate file of a CAMU assembly Adraw or part node to change the visual information of the components in EPD.Visualizer or 3D Viewer. Use the Viewstate menu (Display > Viewstate) or right-click in the Product Structure window, with or without a part node selected, and use the following commands on the short-cut menu:

- Load Viewstate
- Save Viewstate
- Save As Viewstate

Please note: You cannot use the Viewstate menu or access the viewstate files when the assembly root node is selected.



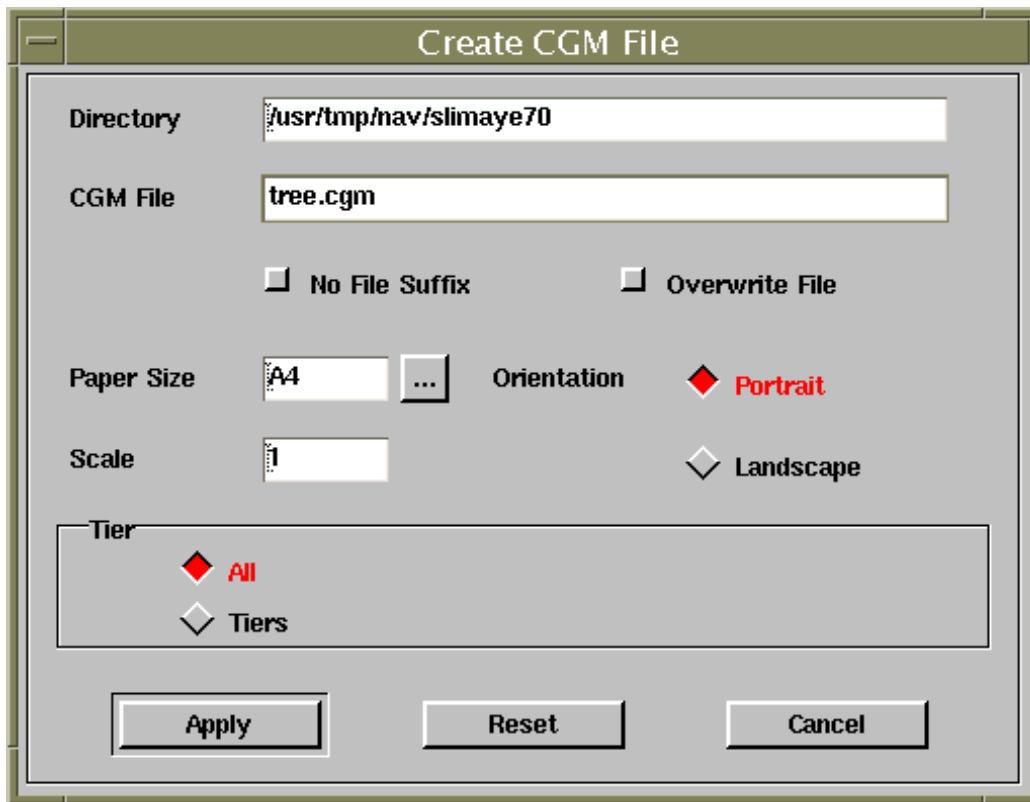
Please note: You cannot load or save viewstate files in the standalone mode of EPD.Visualizer.

EPD.Visualizer or 3D Viewer applies the visual information of the components listed in the viewstate files to the corresponding components of the CAMU assembly loaded in EPD.Visualizer or 3D Viewer. You can save the viewstate files with these visual changes of its components. The Add Viewstates Report shows the status of the updated graphics of the loaded components.

Please note: You cannot load in EPD.Visualizer or 3D Viewer a viewstate file created in CADD5 5i Release 14.

Creating the CGM File of the Product Structure Tree

You can create a binary CGM file of a product structure tree on UNIX and Windows, but you can plot it only on UNIX. The Create CGM File dialog box is now available on UNIX and Windows.

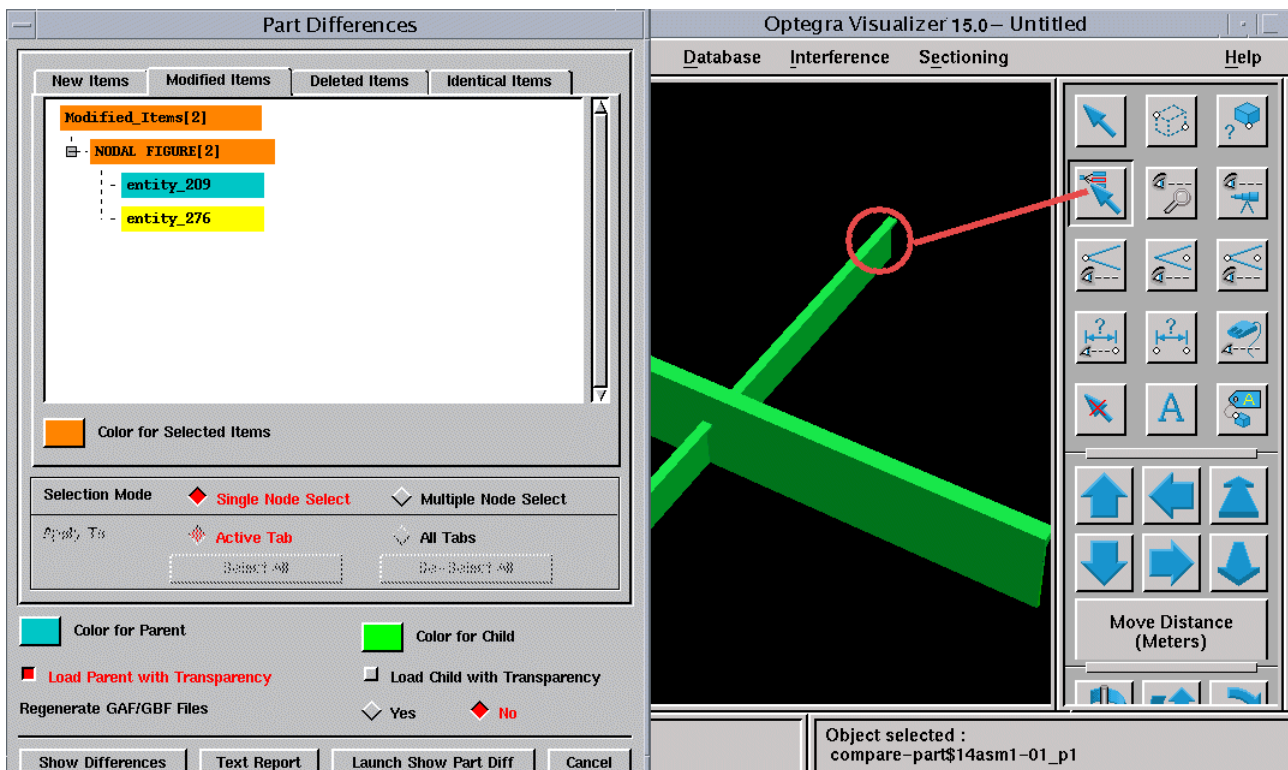


Enhancements to the COMPARE Part Command

Enhancements to the Compare Part functionality include:

- Generation of the comparison results in the XML format
- Comparison of layer and color differences of entities in the compared parts
- Selection of compared items in EPD.Visualizer or 3D Viewer including selecting and scrolling to them in the Part Differences window

The Generate Part Differences option from Tools > Compare CADDs Parts in EPD.Connect compares two CADDs parts and generates a report file with the comparison results in the XML format. The details in the XML file include layer and color differences of the entities in the CADDs parts compared. A DTD (Document Type Definition) is also generated as an external reference.



Use the Show Part Differences dialog box (Tools > Compare CADDs Parts > Show Part Differences) to process this XML file and visualize the two parts and their differences in EPD.Visualizer or 3D Viewer. You can select an item in EPD.Visualizer or 3D Viewer and select and scroll to the corresponding item in the relevant tree list of the Part Differences window in EPD.Connect. Alternatively, select an item in EPD.Visualizer and highlight the corresponding

item in the Part Differences window without scrolling. You can also scroll to an item in the Part Differences window without selecting and highlighting it.

Use the details of the XML file to generate and display a report of the comparison in the TEXT REPORT window.

Enhanced Performance of Runtime List of Applications

Application panels, such as the Data Browser, can now quickly display the list of applications at runtime. If you are not the Vault Administrator, you must restart EPD.Connect to refresh the information on the application lists when the Vault Administrator changes application data from the Application Environment window. Vault administrators need not restart EPD.Connect as the modified application data is automatically updated on the various application lists.

Rulebase Support for CATIA V5

CATIA rulebase support now extends to CATIA V5. You can perform Vault operations such as, STORE, UPDATE, REPLACE, GET, and READ on CATIA V5 parts and assemblies and CATIA V4 model files.

You can only view the CATIA V4 assembly product structure in EPD.Connect and display V4 models in EPD.Visualizer or 3D Viewer. You cannot view CATIA V5 parts and assemblies in EPD.Visualizer or 3D Viewer. To visualize CATIA V5 parts and assemblies, use the CADverter of Theorem Solutions to convert CATIA V5 assemblies to product structures (`_ps`) that you can open in EPD.Connect. This conversion creates the visualization `.gbf` files. You can view the associated parts in EPD.Visualizer or 3D Viewer.

Additionally, you can also use the `-epdconnect` option of ProductView adapter to create the product structures and the associated `.gbf` files required by EPD.Connect and EPD.Visualizer.

