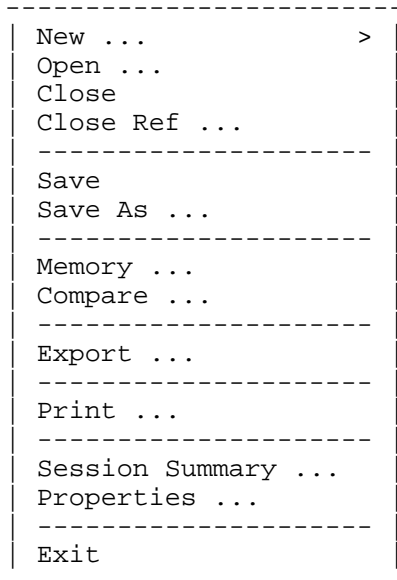


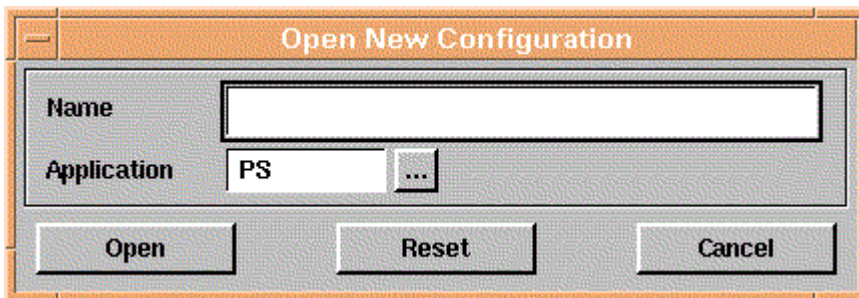
Menüs : File

Structure Mode



Untermenues :

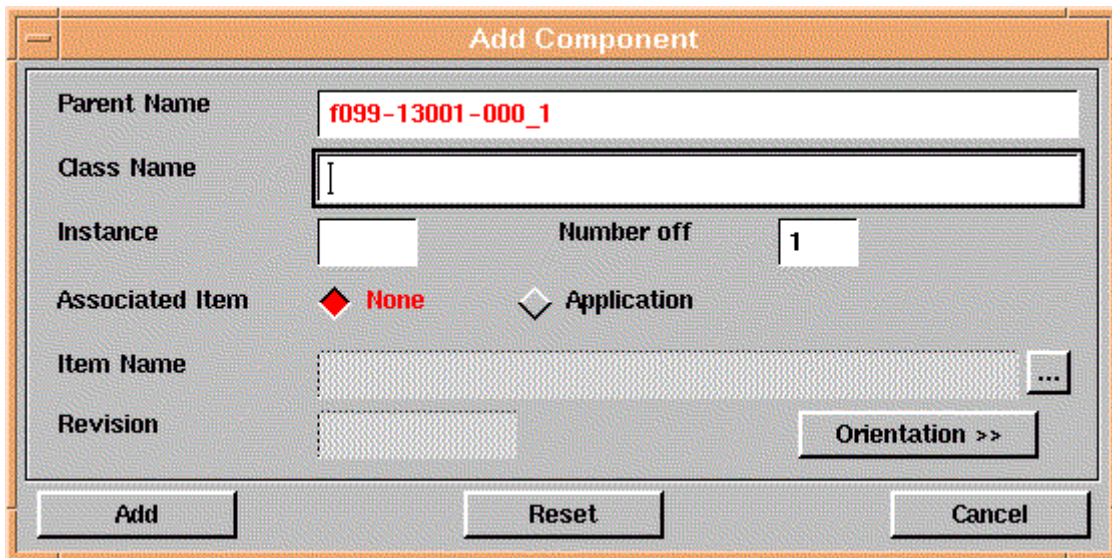
Activate New > Structure ...  
Assembly ...



Menüs : Edit

Structure Mode

- Add Component ...
- Swap Components
- 
- Reorder Components ..
- 
- Undo
- Redo
- Cut
- Copy
- Paste
- 
- Global Attribute ...
- 
- Set Revisions
- Unset Revisions
- 
- Options ...



**Menüs : View**

```

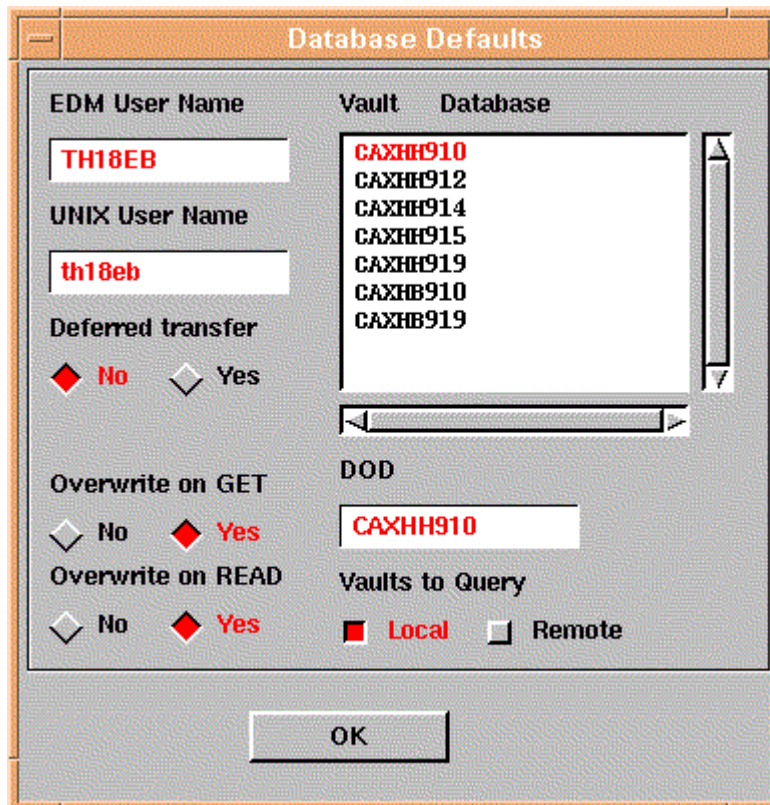
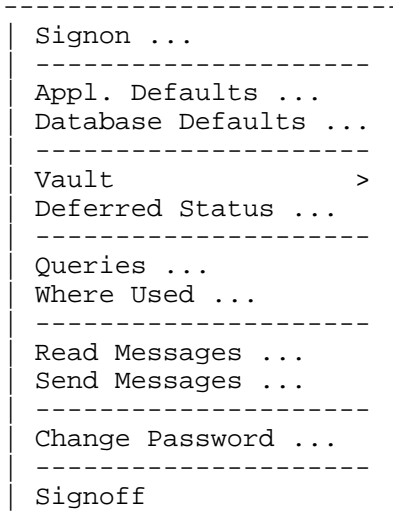
-----
Control ...
Component Text ...
TreeFont Customizer ...
-----
Save State ...
Restore State ...
-----
Compress ...
Uncompress ...
Access ...
Highlight ...
Visibility ...
Browser ...
-----
Select >
Highlight >
Hide >
Link >
Clear >
-----
Trace Selected
-----
    
```

**Untermenüs :**

```

Select > Highlighted
          Not Highlighted
          Select To Root
Highlight > Selected
          Not Selected
Hide > Selected
          Not Selected
Link > Selected
          Highlighted
Clear > All Selected
          All Links
          All Highlight
          All Hidden
          All Compare
          All Access
          All flags
          Selected Highlight
          Selected Hide
    
```

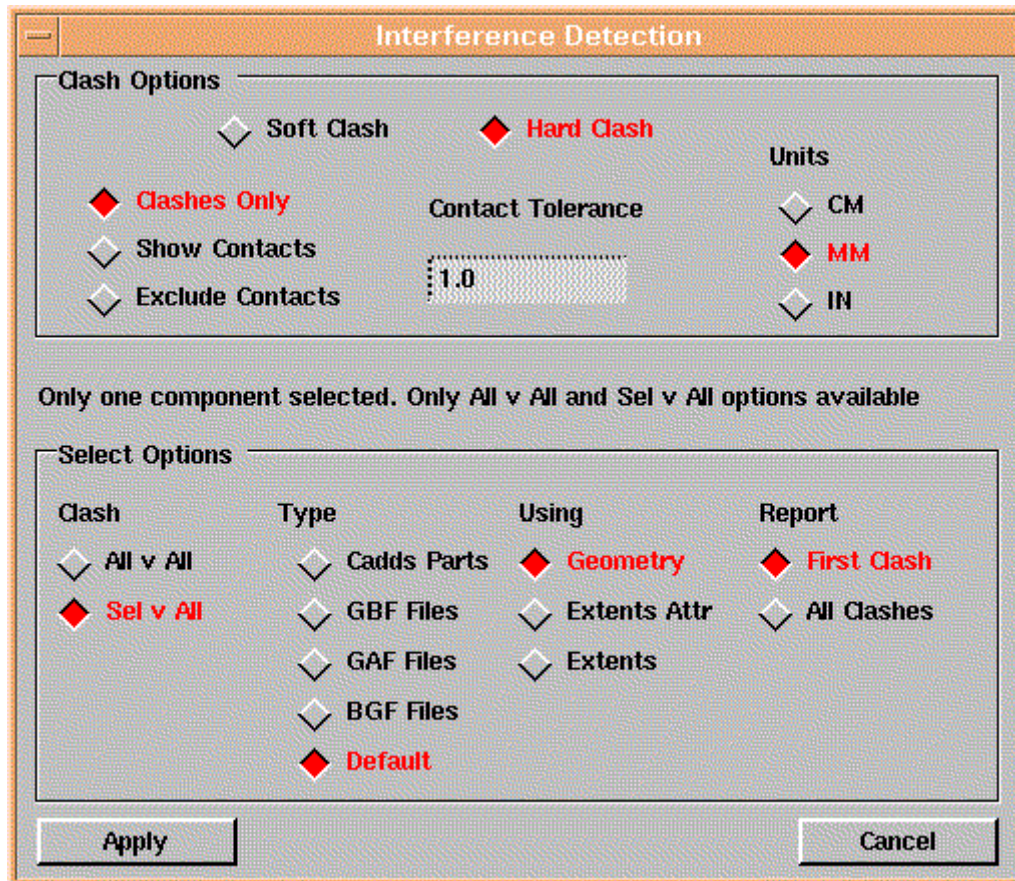
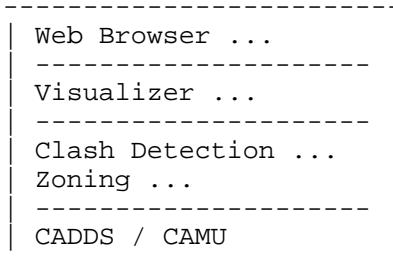
Menüs : Database



Menüs : Database / VAULT

Get Latest Rev	Update a component with its latest item-revision from the Vault.
Signout	Lock a selected component in the Vault, preventing modification by others.
Read specific Rev	Copy a specified version of an item from the Vault to the local workstation.
-----	
Update	Copy the current version of an item to the Vault, but leave it as locked for your use only.
Replace	Move an item back to the Vault, and unlock it.
Reset	Unlock a Vault item that is signed-out, without signing it back in first.
Store	Store a local item in the Vault as a new Item. Select only from the EPD.Connect window.
-----	
Copy	Copy a Vault item and store it with a new name.
-----	
Change Attributes	Modify default file attributes of an item in the Vault.
Edit Attributes	Modify custom file attributes of an item in the Vault.
Refresh Attributes	Update attributes of selected component. Select only from the EPD.Connect window.
Change Revision	Change the file revision of an item.
-----	
Change Status	Change an item's Vault status code.
Request Review	Initiate a review procedures for a Vault item.
Respond to Review	Respond to a request for item review.
-----	
Mark For Archive	Mark a Vault item for archive when access to it is not necessary.
Mark For Delete	Mark a Vault item for deletion when it is no longer needed.
Unmark	Remove archive and delete file markers.
-----	
Register	Register a component in the distr. vault.
Unregister	Unregister a component.
Subscribe	Subscribe components to actions in the distributed vault.
Unsubscribe	Unsubscribe an action.
Distribute	Distribute a component in the distr. vault.
-----	
Info	List information about a selected component

Menüs : Tools



## Menüs : Display

Load	>
Delete	>
Convert	>
-----	
Show	>
Hide	>
Select	>
Deselect	>
Highlight	>
Transparency	>
Color	>
-----	
Options	>

## Menüs : Display

Load	>	All Selected Highlighted Only Selected Only Highlighted
Delete Convert	>	All Selected Highlighted
-----		
Show Hide	>	All Selected Highlighted Only Selected Only Highlighted
Select	>	Selected Only Selected
Deselect	>	All Selected
Highlight Transparency	>	Selected Highlighted Only Selected Only Highlighted
Color	>	Reset All Reset Selected Reset Highlighted From Indicators All White
-----		
Options	>	Load Shell Polygons Load Flat Polygons



## Menüs : Window

```
-----  
| Structure Window ...  
| Structure Overview ...  
|-----  
| Information Browser ...  
| Data Browser ...  
| Data Browser Item Info ...  
|-----  
| Component Status ...  
| Memory Status ...  
| Transfer Requests ...  
| Indicator Key ...  
|-----  
| Attachment Window ...  
| Clipboard ...  
|-----  
| Info Browser Customizer ..  
| Toolbar Customizer ...  
| Menu Customizer ...  
| Heading Customizer ...  
|-----
```

## Menüs : Reports

```
-----  
| Parts_list  
| Indented_parts_list  
| Bom  
| Assembly_weight  
| Status_to_plan  
| -----  
| API.Tree Walk  
| API.Tree list  
| -----
```

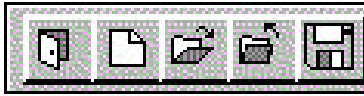
## Menü : Admin

```
-----  
| Appl. Environment ...  
| Appl. Definition ...  
| Appl. Project ...  
| -----  
| GUI Preferences ...  
| -----
```

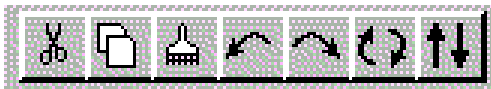
## Menü : Help

```
-----  
| Audit Log ...  
| -----  
| About EPD.Connect ...  
| -----  
| Print Environment  
| -----
```

Menüs : Shortcut-Leiste



- ↑ Save the current configuration
- ↑ Close the current configuration
- ↑ Open old configuration
- ↑ Open new configuration
- ↑ Exit the application



- ↑ Perform a swap of components
- ↑ Perform an reorder of components
- ↑ Perform an redo of the cut/paste action
- ↑ Perform an undo of the cut/paste action
- ↑ Paste selected components from the clipboard
- ↑ Copy selected components to the clipboard
- ↑ Cut selected components to the clipboard

Menüs : Shortcut-Leiste

